



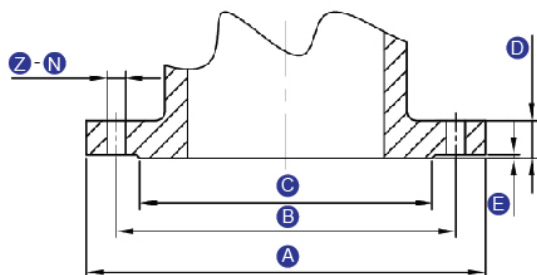
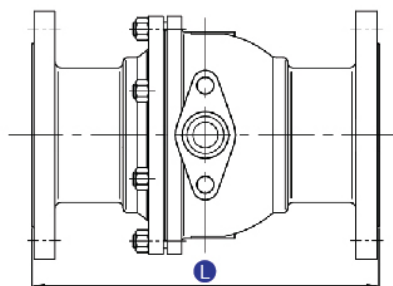
# CAST IRON BALL VALVE FLANGED END

## 2-PC Ball Valve Flanged JIS 10K



### MAIN PARTS AND MATERIALS

NO	NAME	MATERIAL
1	Body	WCB
2	Ball	304
3	Seat	RPTFE
4	Nut	304
5	Handle	304
6	Stem	304
7	Thrust Gasket	PTFE
8	Cap	304
9	Nut	304
10	Bolt	304
11	Gasket	PTFE



### CONFIGURATION DIMENSION

Size		A	B	C	D	E	L	Z-N
DN	Inch							
15	1/2"	95	70	51	13.5	1	110	4-15
20	3/4"	100	75	53	15	1	120	4-15
25	1"	125	90	65	15	1	127	4-19
32	1 1/4"	135	100	75	16	2	142	4-19
40	1 1/2"	140	105	79	12	2	166	4-19
50	2"	155	120	97	18	2	180	4-19
65	2 1/2"	179	140	110	20	2	192	4-19
80	3"	185	150	126	20	2	205	8-19
100	4"	210	175	147	21	2	233	8-19
125	5"	255	211	180	23	2	357	8-22
150	6"	279	241	212	25	2	398	8-22
200	8"	332	290	260	27	2	462	8-22

### FEATURES

- Full Port
- Class 150
- Blow-Out Proof Stem
- Blance Hole in Ball Slot
- Design Standard: ASME B16.34
- Face to Face: ASME B16.10
- Testing Standard: API 598/SP-110

Authorised Distributor :



### NEPTEC ENGINEERING SDN BHD

No. 33-1, Jln Kebun Nenas 4A/KS 8, (1068405-P)  
 Bandar Putera 2, 41200 Klang, Selangor.  
 Website : [www.neptec.com.my](http://www.neptec.com.my)  
 Tel : 03-5161 3330  
 Fax : 03-5161 3331

H/P : 012-223 8681  
 Email : [sales@neptec.net](mailto:sales@neptec.net)

H/P : 012-664 2440  
 Email : [tcgan@neptec.net](mailto:tcgan@neptec.net)

H/P : 012-289 9720  
 Email : [ts@neptec.net](mailto:ts@neptec.net)